

Anti-STMN1 Polyclonal Antibody



<u>Catalog No.</u>	<u>Size</u>
A200190-01	50 µl
A200190-02	100 µl

Specificity	Anti-STMN1 (human mouse rat)
Source	Rabbit Polyclonal
Application	ELISA IHC
Form	Liquid, 1 mg/ml

Product

Swiss-Prot No.: P16949

Other Names: LAG; LAP18; Leukemia-associated gene protein; Leukemia-associated phosphoprotein p18; Metablastin; Oncoprotein 18; Op18; Phosphoprotein p19; pp17; pp19; PR22; Pr22 protein; Prosoin; stathmin; STN1

Specificity and Sensitivity

STMN1 antibody detects endogenous levels of total STMN1 protein.

Source and Purification

The antiserum was produced against synthesized peptide derived from Internal of human STMN1.

The antibody was affinity-purified from rabbit antiserum by affinity-chromatography using epitope-specific immunogen.

Application Notes

Optimal working dilutions should be determined experimentally by the investigator. Suggested starting dilutions are as follows:

IHC: 1:50~1:100 ELISA: 1:20000

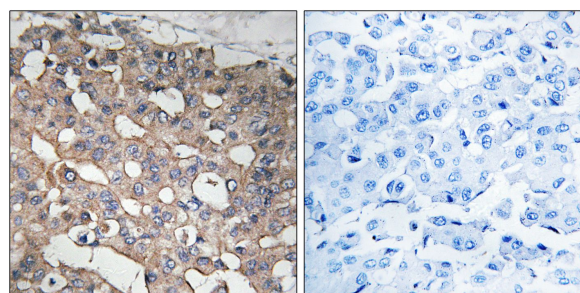
Storage Buffer

Rabbit IgG in phosphate buffered saline (without Mg^{2+} and Ca^{2+}), pH 7.4, 150mM NaCl, 0.02% sodium azide and 50% glycerol.

Storage Instructions

Stable for 1 year at -20°C from date of shipment. For maximum recovery of product, centrifuge the original vial after thawing and prior to removing the cap. Aliquot to avoid repeated freezing and thawing. Aliquot will be stable at 4°C for 3 months.

Images



Peptide

-

+

Immunohistochemistry analysis of paraffin-embedded human breast carcinoma tissue using STMN1 antibody.