

Anti- LATS1/2 Polyclonal Antibody



| <u>Catalog No.</u> | <u>Size</u> |
|--------------------|-------------|
| A200204-01 | 50 µl |
| A200204-02 | 100 µl |

| | |
|--------------------|----------------------------|
| Specificity | Anti-LATS1/2 (human mouse) |
| Source | Rabbit Polyclonal |
| Application | IHC ELISA |
| Form | Liquid, 1 mg/ml |

Product

Swiss-Prot No.: O95835/Q9NRM7

Other Names: EC 2.7.11.1; Large tumor suppressor 1; WARTS

Specificity and Sensitivity

LATS1/2 antibody detects endogenous levels of total LATS1/2 protein.

Source and Purification

The antiserum was produced against synthesized peptide derived from Internal of human LATS1/2.

The antibody was affinity-purified from rabbit antiserum by affinity-chromatography using epitope-specific immunogen.

Application Notes

Optimal working dilutions should be determined experimentally by the investigator. Suggested starting dilutions are as follows:

IHC: 1:50~1:100 ELISA: 1:40000

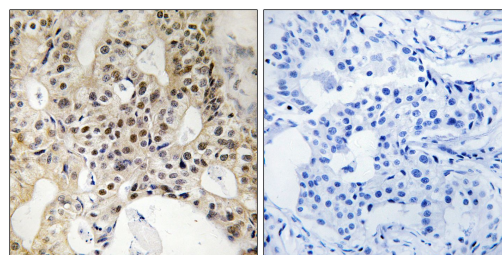
Storage Buffer

Rabbit IgG in phosphate buffered saline (without Mg^{2+} and Ca^{2+}), pH 7.4, 150mM NaCl, 0.02% sodium azide and 50% glycerol.

Storage Instructions

Stable for 1 year at -20°C from date of shipment. For maximum recovery of product, centrifuge the original vial after thawing and prior to removing the cap. Aliquot to avoid repeated freezing and thawing. Aliquot will be stable at 4°C for 3 months.

Images



peptide - +

Immunohistochemistry analysis of paraffin-embedded human breast carcinoma tissue using LATS1/2 antibody.