

# Anti- MAP3K8 (Ab-400) Polyclonal Antibody



Catalog No.	Size
A200208-01	50 µl
A200208-02	100 µl

Specificity	Anti-MAP3K8 (Ab-400) (human mouse rat)
Source	Rabbit Polyclonal
Application	WB ELISA IHC
Form	Liquid, 1 mg/ml

## Product

**Swiss-Prot No.:** P41279

**Other Names:** C-COT; cancer Osaka thyroid oncogene; COT proto-oncogene serine/threonine-protein kinase; EC 2.7.11.25; kinase Cot; M3K8; MAP3K8; mitogen-activated protein kinase kinase kinase 8; TPL-2; Tpl2; TPL2; tumor progression locus 2

## Specificity and Sensitivity

MAP3K8 (Ab-400) antibody detects endogenous levels of total MAP3K8 protein.

## Source and Purification

The antiserum was produced against synthesized non-phosphopeptide derived from human MAP3K8 around the phosphorylation site of serine 400 (C-Q-S<sup>P</sup>-L-D).

The antibody was affinity-purified from rabbit antiserum by affinity-chromatography using epitope-specific immunogen.

## Application Notes

Optimal working dilutions should be determined experimentally by the investigator. Suggested starting dilutions are as follows:

WB: 1:500~1:3000 IHC: 1:50~1:100 ELISA: 1:5000

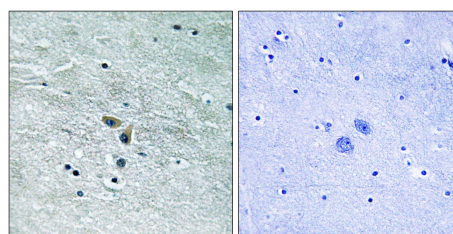
## Storage Buffer

Rabbit IgG in phosphate buffered saline (without Mg<sup>2+</sup> and Ca<sup>2+</sup>), pH 7.4, 150mM NaCl, 0.02% sodium azide and 50% glycerol.

## Storage Instructions

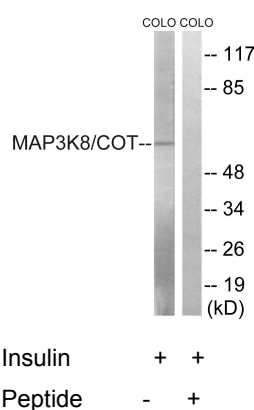
Stable for 1 year at -20°C from date of shipment. For maximum recovery of product, centrifuge the original vial after thawing and prior to removing the cap. Aliquot to avoid repeated freezing and thawing. Aliquot will be stable at 4°C for 3 months.

## Images



peptide - +

Immunohistochemistry analysis of paraffin-embedded human brain tissue using MAP3K8 (Ab-400) antibody.



Western blot analysis of extracts from COLO cells, treated with Insulin (0.01U/ml, 15mins), using MAP3K8 (Ab-400) antibody.