

# Anti-4E-BP1 Polyclonal Antibody



<u>Catalog No.</u>	<u>Size</u>
A200262-01	50 µl
A200262-02	100 µl

<b>Specificity</b>	Anti-4E-BP1 (human)
<b>Source</b>	Rabbit Polyclonal
<b>Application</b>	ELISA IHC
<b>Form</b>	Liquid, 1 mg/ml

## Product

**Swiss-Prot No.:** Q13541

**Other Names:** 4EBP1; EIF4EBP1; Eukaryotic translation initiation factor 4E binding protein 1; Insulin-stimulated EIF-4E binding protein PHAS-I; P/OKCL.6; PHAS-1; PHAS-I

## Specificity and Sensitivity

4E-BP1 antibody detects endogenous levels of total 4E-BP1 protein.

## Source and Purification

The antiserum was produced against synthesized peptide derived from Internal of human 4E-BP1.

The antibody was affinity-purified from rabbit antiserum by affinity-chromatography using epitope-specific immunogen.

## Application Notes

Optimal working dilutions should be determined experimentally by the investigator. Suggested starting dilutions are as follows:

IHC: 1:50~1:100      ELISA: 1:40000

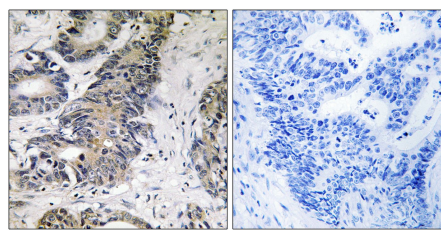
## Storage Buffer

Rabbit IgG in phosphate buffered saline (without  $Mg^{2+}$  and  $Ca^{2+}$ ), pH 7.4, 150mM NaCl, 0.02% sodium azide and 50% glycerol.

## Storage Instructions

Stable for 1 year at  $-20^{\circ}\text{C}$  from date of shipment. For maximum recovery of product, centrifuge the original vial after thawing and prior to removing the cap. Aliquot to avoid repeated freezing and thawing. Aliquot will be stable at  $4^{\circ}\text{C}$  for 3 months.

## Images



Peptide      -      +

Immunohistochemistry analysis of paraffin-embedded human colon carcinoma tissue using 4E-BP1 antibody.