

Anti-MEF2C (Ab-396) Polyclonal Antibody



Catalog No.	Size
A200286-01	50 µl
A200286-02	100 µl

Specificity	Anti-MEF2C (Ab-396) (human mouse)
Source	Rabbit Polyclonal
Application	WB ELISA
Form	Liquid, 1 mg/ml

Product

Swiss-Prot No.: Q06413

Other Names: Myocyte enhancer factor 2C; Myocyte-specific enhancer factor 2C; Similar to MADS box transcription enhancer factor 2 polypeptide C

Specificity and Sensitivity

MEF2C (Ab-396) antibody detects endogenous levels of total MEF2C protein.

Source and Purification

The antiserum was produced against synthesized non-phosphopeptide derived from human MEF2C around the phosphorylation site of serine 396 (P-V-S^P-P-P).

The antibody was affinity-purified from rabbit antiserum by affinity-chromatography using epitope-specific immunogen.

Application Notes

Optimal working dilutions should be determined experimentally by the investigator. Suggested starting dilutions are as follows:

WB: 1:500~1:3000 ELISA: 1:40000

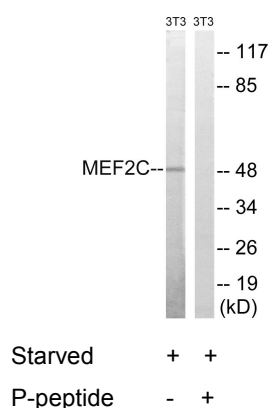
Storage Buffer

Rabbit IgG in phosphate buffered saline (without Mg²⁺ and Ca²⁺), pH 7.4, 150mM NaCl, 0.02% sodium azide and 50% glycerol.

Storage Instructions

Stable for 1 year at -20°C from date of shipment. For maximum recovery of product, centrifuge the original vial after thawing and prior to removing the cap. Aliquot to avoid repeated freezing and thawing. Aliquot will be stable at 4°C for 3 months.

Images



Western blot analysis of extracts from 3T3 cells, treated with starved (24hours), using MEF2C (Ab-396) antibody.