

# Anti-PPP1R2 (Ab-44) Polyclonal Antibody



| Catalog No. | Size   |
|-------------|--------|
| A200294-01  | 50 µl  |
| A200294-02  | 100 µl |

|                    |                                       |
|--------------------|---------------------------------------|
| <b>Specificity</b> | Anti-PPP1R2 (Ab-44) (human mouse rat) |
| <b>Source</b>      | Rabbit Polyclonal                     |
| <b>Application</b> | WB ELISA                              |
| <b>Form</b>        | Liquid, 1 mg/ml                       |

## Product

**Swiss-Prot No.:** P41236

**Other Names:** I-2; IPP-2; IPP2; Protein phosphatase inhibitor 2

## Specificity and Sensitivity

PPP1R2 (Ab-44) antibody detects endogenous levels of total PPP1R2 protein.

## Source and Purification

The antiserum was produced against synthesized peptide derived from Internal of human PPP1R2.

The antibody was affinity-purified from rabbit antiserum by affinity-chromatography using epitope-specific immunogen.

## Application Notes

Optimal working dilutions should be determined experimentally by the investigator. Suggested starting dilutions are as follows:

WB: 1:500~1:3000      ELISA: 1:40000

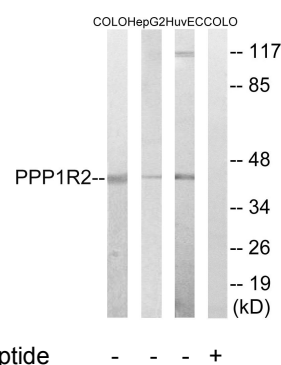
## Storage Buffer

Rabbit IgG in phosphate buffered saline (without  $Mg^{2+}$  and  $Ca^{2+}$ ), pH 7.4, 150mM NaCl, 0.02% sodium azide and 50% glycerol.

## Storage Instructions

Stable for 1 year at  $-20^{\circ}C$  from date of shipment. For maximum recovery of product, centrifuge the original vial after thawing and prior to removing the cap. Aliquot to avoid repeated freezing and thawing. Aliquot will be stable at  $4^{\circ}C$  for 3 months.

## Images



Western blot analysis of extracts from COLO cells, HepG2 cells and HUVEC cells, using PPP1R2 (Ab-44) antibody.