

Anti- TOB1 (Ab-164) Polyclonal Antibody



Catalog No.	Size
A200336-01	50µl
A200336-02	100µl

Specificity	Anti- TOB1 (Ab-164) (Human Mouse Rat)
Source	Rabbit Polyclonal
Application	WB ELISA
Form	Liquid, 1 mg/ml

Background Information

Swiss-Prot No.: P50616

Other Names: TOB; Transducer of erbB-2 1

Specificity and Sensitivity

TOB1 (Ab-164) antibody detects endogenous levels of total TOB1 protein.

Source and Purification

The antiserum was produced against synthesized non-phosphopeptide derived from human TOB1 around the phosphorylation site of serine 164 (A-V-S^P-P-T).

The antibody was affinity-purified from rabbit antiserum by affinity-chromatography using epitope-specific immunogen.

Application Notes

Optimal working dilutions should be determined experimentally by the investigator. Suggested starting dilutions are as follows:

WB: 1:500~1:3000 ELISA: 1:10000

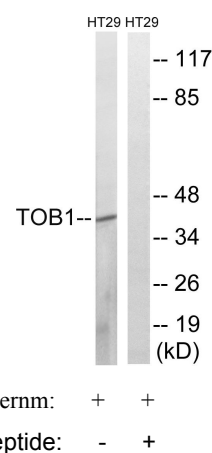
Storage Buffer

Rabbit IgG in phosphate buffered saline (without Mg²⁺ and Ca²⁺), pH 7.4, 150mM NaCl, 0.02% sodium azide and 50% glycerol.

Storage Instructions

Stable for 1 year at -20°C from date of shipment. For maximum recovery of product, centrifuge the original vial after thawing and prior to removing the cap. Aliquot to avoid repeated freezing and thawing. Aliquot will be stable at 4°C for 3 months.

Images



Western blot analysis of extracts from HT-29 cells, treated with serum (20%, 15mins), using TOB1 (Ab-164) antibody.