

# Anti- APAF-1-ALT Polyclonal Antibody



Catalog No.	Size
A300007-01	50 µl
A300007-02	100 µl

Specificity	Anti- APAF-1-ALT (human)
Source	Rabbit Polyclonal
Application	WB ELISA IHC
Form	Liquid, 1 mg/ml

## Product

**Swiss-Prot No.:** O14727

**Other Names:** APAF1-interacting protein, APIP, APIP2, CGI-29 protein, MMRP19, dJ179L10.2, likely ortholog of mouse monocyte macrophage 19

## Specificity and Sensitivity

APAF-1-ALT antibody detects endogenous levels of total APAF-1-ALT protein.

## Source and Purification

The antiserum was produced against synthesized peptide derived from human APAF-1-ALT.

The antibody was affinity-purified from rabbit antiserum by affinity-chromatography using epitope-specific immunogen.

## Application Notes

Optimal working dilutions should be determined experimentally by the investigator. Suggested starting dilutions are as follows:

WB: 1:500~1:3000    IHC: 1:50~1:100    ELISA: 1:10000

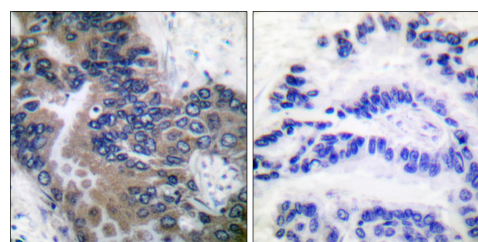
## Storage Buffer

Rabbit IgG in phosphate buffered saline (without  $Mg^{2+}$  and  $Ca^{2+}$ ), pH 7.4, 150mM NaCl, 0.02% sodium azide and 50% glycerol.

## Storage Instructions

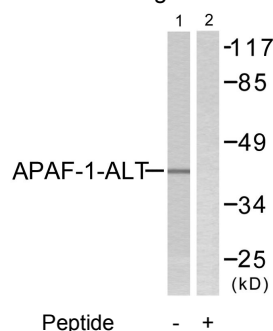
Stable for 1 year at -20°C from date of shipment. For maximum recovery of product, centrifuge the original vial after thawing and prior to removing the cap. Aliquot to avoid repeated freezing and thawing. Aliquot will be stable at 4°C for 3 months.

## Images



Peptide                      -                      +

Immunohistochemical analysis of paraffin-embedded human lung carcinoma tissue using APAF-1-ALT antibody.



Western blot analysis of extracts from COLO205, using APAF-1-ALT antibody.

## Related Products

PW001: Super ECL Assay kit

E030120 : HRP, Goat Anti-Rabbit IgG(H+L)

E030220 : AP, Goat Anti-Rabbit IgG(H+L)

E021010: Anti-GAPDH Mouse Monoclonal Antibody

E021020: Anti-beta Actin Mouse Monoclonal Antibody

E022330: Anti-His Tag Mouse Monoclonal Antibody-HRP