

Anti- Cox1 Polyclonal Antibody



Catalog No.	Size
A300035-01	50 µl
A300035-02	100 µl

Specificity	Anti- Cox1 (human)
Source	Rabbit Polyclonal
Application	WB ELISA IHC
Form	Liquid, 1 mg/ml

Product

Swiss-Prot No.: P23219

Other Names: COX3, PCOX1, CYCLOOXYGENASE 1, PARTIAL COX1 PROTEINS, PGHS1 CYCLOOXYGENASE 3, PROSTAGLANDIN G/H SYNTHASE 1, prostaglandin-endoperoxide synthase 1

Specificity and Sensitivity

COX1 antibody detects endogenous levels of total COX1 protein.

Source and Purification

The antiserum was produced against synthesized peptide derived from human COX1.

The antibody was affinity-purified from rabbit antiserum by affinity-chromatography using epitope-specific immunogen.

Application Notes

Optimal working dilutions should be determined experimentally by the investigator. Suggested starting dilutions are as follows:

WB: 1:500~1:3000 IHC: 1:50~1:100 ELISA: 1:40000

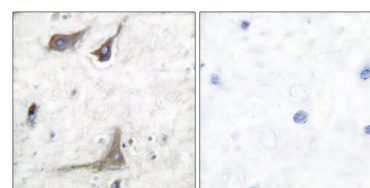
Storage Buffer

Rabbit IgG in phosphate buffered saline (without Mg^{2+} and Ca^{2+}), pH 7.4, 150mM NaCl, 0.02% sodium azide and 50% glycerol.

Storage Instructions

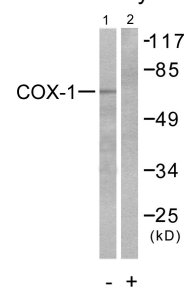
Stable for 1 year at $-20^{\circ}C$ from date of shipment. For maximum recovery of product, centrifuge the original vial after thawing and prior to removing the cap. Aliquot to avoid repeated freezing and thawing. Aliquot will be stable at $4^{\circ}C$ for 3 months.

Images



Peptide - +

Immunohistochemical analysis of paraffin-embedded human brain tissue using COX1 antibody.



Peptide - +

Western blot analysis of extracts from HuvEc cells, using COX1 antibody.

Related Products

PW001: Super ECL Assay kit

E030120 : HRP, Goat Anti-Rabbit IgG(H+L)

E030220 : AP, Goat Anti-Rabbit IgG(H+L)

E021010: Anti-GAPDH Mouse Monoclonal Antibody

E021020: Anti-beta Actin Mouse Monoclonal Antibody

E022330: Anti-His Tag Mouse Monoclonal Antibody-HRP