

# Anti- Cullin 2 Polyclonal Antibody



Catalog No.	Size
A300039-01	50 µl
A300039-02	100 µl

<b>Specificity</b>	Anti- Cullin 2 (human mouse)
<b>Source</b>	Rabbit Polyclonal
<b>Application</b>	WB ELISA IHC IF
<b>Form</b>	Liquid, 1 mg/ml

## Product

**Swiss-Prot No.:** Q13617

**Other Names:** Cullin-2, CUL-2

## Specificity and Sensitivity

Cullin 2 antibody detects endogenous levels of total Cullin 2 protein.

## Source and Purification

The antiserum was produced against synthesized peptide derived from human Cullin 2.

The antibody was affinity-purified from rabbit antiserum by affinity-chromatography using epitope-specific immunogen.

## Application Notes

Optimal working dilutions should be determined experimentally by the investigator. Suggested starting dilutions are as follows:

WB: 1:500~1:3000      IHC: 1:50~1:100

ELISA: 1:5000          IF: 1:100~1:500

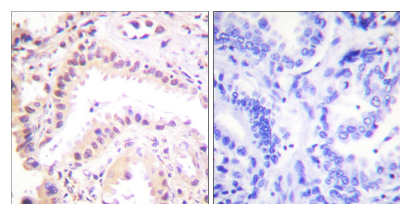
## Storage Buffer

Rabbit IgG in phosphate buffered saline (without  $Mg^{2+}$  and  $Ca^{2+}$ ), pH 7.4, 150mM NaCl, 0.02% sodium azide and 50% glycerol.

## Storage Instructions

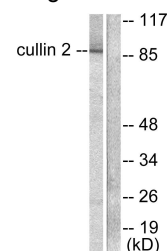
Stable for 1 year at -20°C from date of shipment. For maximum recovery of product, centrifuge the original vial after thawing and prior to removing the cap. Aliquot to avoid repeated freezing and thawing. Aliquot will be stable at 4°C for 3 months.

## Images



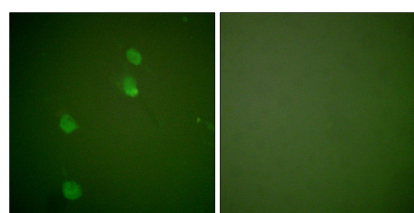
Peptide                      -                      +

Immunohistochemical analysis of paraffin-embedded human lung carcinoma tissue using Cullin 2 antibody.



Peptide                      -                      +

Western blot analysis of extracts from LOVO cells, using Cullin 2 antibody.



Peptide                      -                      +

Immunofluorescence analysis of NIH/3T3 cells, using Cullin 2 antibody.

## Related Products

E030120 : HRP, Goat Anti-Rabbit IgG(H+L)

E021010: Anti-GAPDH Mouse Monoclonal Antibody

E021020: Anti-beta Actin Mouse Monoclonal Antibody

E022200: Anti-GFP Tag Rabbit Polyclonal Antibody