

Anti- Cyclin G Polyclonal Antibody



Catalog No.	Size
A300044-01	50 µl
A300044-02	100 µl

Specificity	Anti- Cyclin G (human mouse rat)
Source	Rabbit Polyclonal
Application	WB ELISA IHC
Form	Liquid, 1 mg/ml

Product

Swiss-Prot No.: P51959

Other Names: Ribosomal protein S6 kinase I, S6K, S6K1, 70 kDa ribosomal protein S6 kinase 1, p70 S6 kinase alpha, p70(S6K)-alpha, p70-S6K, P70S6K, p70-alpha

Specificity and Sensitivity

Cyclin G antibody detects endogenous levels of total Cyclin G protein.

Source and Purification

The antiserum was produced against synthesized peptide derived from human Cyclin G.

The antibody was affinity-purified from rabbit antiserum by affinity-chromatography using epitope-specific immunogen.

Application Notes

Optimal working dilutions should be determined experimentally by the investigator. Suggested starting dilutions are as follows:

WB: 1:500~1:3000 IHC: 1:50~1:100 ELISA: 1:40000

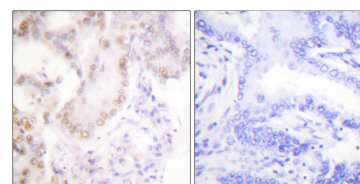
Storage Buffer

Rabbit IgG in phosphate buffered saline (without Mg^{2+} and Ca^{2+}), pH 7.4, 150mM NaCl, 0.02% sodium azide and 50% glycerol.

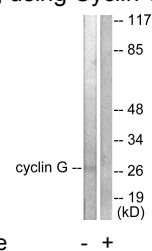
Storage Instructions

Stable for 1 year at -20°C from date of shipment. For maximum recovery of product, centrifuge the original vial after thawing and prior to removing the cap. Aliquot to avoid repeated freezing and thawing. Aliquot will be stable at 4°C for 3 months.

Images



Immunohistochemical analysis of paraffin-embedded human lung carcinoma tissue, using Cyclin G antibody.



Western blot analysis of extracts from Jurkat cells, using Cyclin G antibody.

Related Products

PW001: Super ECL Assay kit

E022330: Anti-His Tag Mouse Monoclonal Antibody-HRP

E030120 : HRP, Goat Anti-Rabbit IgG(H+L)

E021010: Anti-GAPDH Mouse Monoclonal Antibody

E021020: Anti-beta Actin Mouse Monoclonal Antibody

E022200: Anti-GFP Tag Rabbit Polyclonal Antibody