

Anti- DJ-1 Polyclonal Antibody



Catalog No.	Size
A300046-01	50 µl
A300046-02	100 µl

Specificity	Anti- DJ-1 (human mouse rat)
Source	Rabbit Polyclonal
Application	WB ELISA IHC IF
Form	Liquid, 1 mg/ml

Product

Swiss-Prot No.: Q99497

Other Names: ONCOGENE DJ1, PARK7 AMYOTROPHIC LATERAL SCLEROSIS-PARKINSONISM/DEMENTIA COMPLEX 2, PARK7 GENE

Specificity and Sensitivity

DJ-1 antibody detects endogenous levels of total DJ-1 protein.

Source and Purification

The antiserum was produced against synthesized peptide derived from human DJ-1.

The antibody was affinity-purified from rabbit antiserum by affinity-chromatography using epitope-specific immunogen.

Application Notes

Optimal working dilutions should be determined experimentally by the investigator. Suggested starting dilutions are as follows:

WB: 1:500~1:3000 IHC: 1:50~1:100
ELISA: 1:10000 IF: 1:500~1:1000

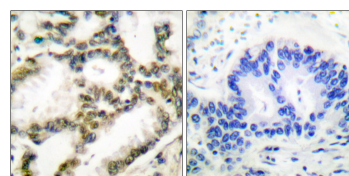
Storage Buffer

Rabbit IgG in phosphate buffered saline (without Mg^{2+} and Ca^{2+}), pH 7.4, 150mM NaCl, 0.02% sodium azide and 50% glycerol.

Storage Instructions

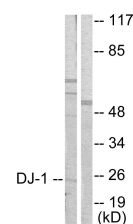
Stable for 1 year at -20°C from date of shipment. For maximum recovery of product, centrifuge the original vial after thawing and prior to removing the cap. Aliquot to avoid repeated freezing and thawing. Aliquot will be stable at 4°C for 3 months.

Images



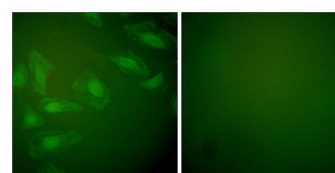
Peptide - +

Immunohistochemical analysis of paraffin-embedded human lung carcinoma tissue using DJ-1 antibody.



Peptide - +

Western blot analysis of extracts from HuvEc cells, using DJ-1 antibody.



Peptide - +

Immunofluorescence analysis of HeLa cells, using DJ-1 antibody.

Related Products

E030120 : HRP, Goat Anti-Rabbit IgG(H+L)

E021010: Anti-GAPDH Mouse Monoclonal Antibody

E021020: Anti-beta Actin Mouse Monoclonal Antibody