

Anti- DNA-PK Polyclonal Antibody



Catalog No.	Size
A300048-01	50 µl
A300048-02	100 µl

Specificity	Anti- DNA-PK (human mouse)
Source	Rabbit Polyclonal
Application	WB ELISA IHC IF
Form	Liquid, 1 mg/ml

Product

Swiss-Prot No.: P78527

Other Names: DNA- PKcs, DNA-dependent protein kinase catalytic subunit, DNPK1, EC 2.7.11.1, P460, PRKD, PRKDC, XRCC7, kinase DNA-PK

Specificity and Sensitivity

DNA-PK antibody detects endogenous levels of total DNA-PK protein.

Source and Purification

The antiserum was produced against synthesized peptide derived from human DNA-PK.

The antibody was affinity-purified from rabbit antiserum by affinity-chromatography using epitope-specific immunogen.

Application Notes

Optimal working dilutions should be determined experimentally by the investigator. Suggested starting dilutions are as follows:

WB: 1:500~1:3000 IHC: 1:50~1:100
ELISA: 1:20000 IF: 1:100~1:500

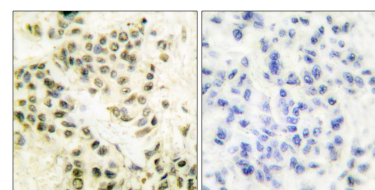
Storage Buffer

Rabbit IgG in phosphate buffered saline (without Mg^{2+} and Ca^{2+}), pH 7.4, 150mM NaCl, 0.02% sodium azide and 50% glycerol.

Storage Instructions

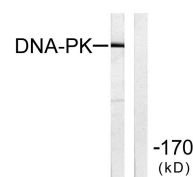
Stable for 1 year at $-20^{\circ}C$ from date of shipment. For maximum recovery of product, centrifuge the original vial after thawing and prior to removing the cap. Aliquot to avoid repeated freezing and thawing. Aliquot will be stable at $4^{\circ}C$ for 3 months.

Images



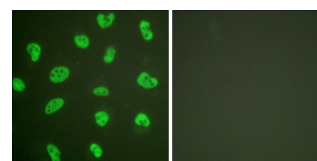
Peptide - +

Immunohistochemical analysis of paraffin-embedded human breast carcinoma tissue using DNA-PK antibody.



Peptide - +

Western blot analysis of extracts from HeLa cells using DNA-PK antibody.



Peptide - +

Immunofluorescence analysis of HeLa cells, treated with Forskolin (40nM, 30mins), using DNA-PK antibody.

Related Products

E030120 : HRP, Goat Anti-Rabbit IgG(H+L)

E032221: Dylight 488, Donkey Anti-Rabbit IgG(H+L)

E021010: Anti-GAPDH Mouse Monoclonal Antibody

E021020: Anti-beta Actin Mouse Monoclonal Antibody

E022330: Anti-His Tag Mouse Monoclonal Antibody-HRP