

# Anti- Histone H4 (Acetyl-Lys5) Polyclonal Antibody



Catalog No.	Size
A302739-01	50 µl
A302739-02	100 µl

<b>Specificity</b>	Anti- Histone H4 (Acetyl-Lys5) (human mouse rat)
<b>Source</b>	Rabbit Polyclonal
<b>Application</b>	WB ELISA IHC IF
<b>Form</b>	Liquid, 1 mg/ml

## Product

**Swiss-Prot No.:** P62805

**Other Names:** H4F2, HIST, HIST1H4A, Histone H4

## Specificity and Sensitivity

Histone H4 (Acetyl-Lys5) antibody detects endogenous levels of total Histone H4 protein only when acetylated at lysine 5.

## Source and Purification

The antiserum was produced against synthesized peptide derived from human human Histone H4 around the acetylation site of lysine 5(R-G-K<sup>A</sup>-G-G).

The antibody was affinity-purified from rabbit antiserum by affinity-chromatography using epitope-specific immunogen.

## Application Notes

Optimal working dilutions should be determined experimentally by the investigator. Suggested starting dilutions are as follows:

WB: 1:500~1:3000 IHC: 1:50~1:100

IF: 1:100~1:500 ELISA: 1:1000

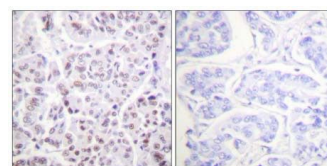
## Storage Buffer

Rabbit IgG in phosphate buffered saline (without Mg<sup>2+</sup> and Ca<sup>2+</sup>), pH 7.4, 150mM NaCl, 0.02% sodium azide and 50% glycerol.

## Storage Instructions

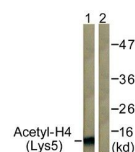
Stable for 1 year at -20°C from date of shipment. For maximum recovery of product, centrifuge the original vial after thawing and prior to removing the cap. Aliquot to avoid repeated freezing and thawing. Aliquot will be stable at 4°C for 3 months.

## Images



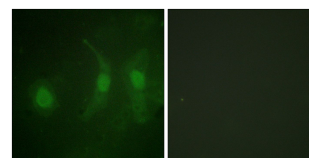
A-peptide - +

Immunohistochemistry analysis of paraffin-embedded human breast carcinoma tissue, using Histone H4 (Acetyl-Lys5) Antibody.



A-peptide - +

Western blot analysis of extracts from COS7 cells, treated with TSA 400nM 24h, using Histone H4 (Acetyl-Lys5) Antibody.



A-peptide - +

Immunofluorescence analysis of HeLa cells, using Histone H4 (Acetyl-Lys5) Antibody.

## Related Products

PW001: Super ECL Assay kit

E030120 : HRP, Goat Anti-Rabbit IgG(H+L)

E030220 : AP, Goat Anti-Rabbit IgG(H+L)

E021010: Anti-GAPDH Mouse Monoclonal Antibody

E021020: Anti-beta Actin Mouse Monoclonal Antibody

E022330: Anti-His Tag Mouse Monoclonal Antibody-HRP