

## Anti- Bcl-2 Mouse Monoclonal Antibody



<u>Catalog No.</u>	<u>Size</u>
E010030-01	50µl
E010030-02	100µl

<b>Product Name</b>	Anti- Bcl-2 Mouse Monoclonal Antibody
<b>Product type</b>	Primary Antibody
<b>Application</b>	WB IHC IF
<b>Description</b>	Mouse Monoclonal to Bcl-2 antibody
<b>Immunogen</b>	A synthetic peptide conjugated to KLH
<b>Specificity</b>	Human Mouse Rat

### Background Information

BCL2 is an integral outer mitochondrial membrane protein that blocks the apoptotic death of some cells such as lymphocytes. Constitutive expression of BCL2, such as in the case of translocation of BCL2 to Ig heavy chain locus, is thought to be the cause of follicular lymphoma. BCL2 suppresses apoptosis in a variety of cell systems including factor-dependent lymphohematopoietic and neural cells. It regulates cell death by controlling the mitochondrial membrane permeability.

### Application Notes

Optimal working dilutions should be determined experimentally by the investigator. Prepare working dilution immediately before use. Suggested starting dilutions are as follows:

Western blot (1:1000-1:5,000), Immunofluorescence and Immunocytochemistry (1:200-1:800).

### Host

Mouse

### Clonality

### Storage Buffer

1mg/ml in PBS, pH 7.4 with 0.02% sodium azide, 50% Glycerol.

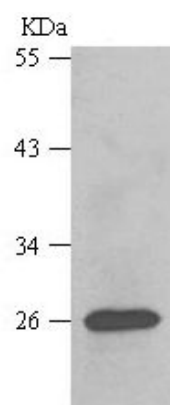
### Form

Liquid, 1mg/ml

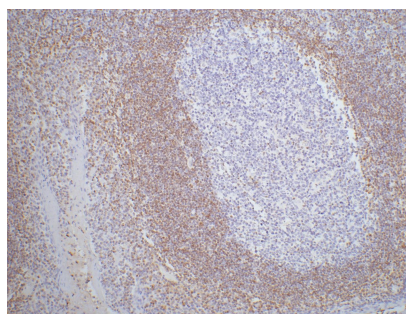
### Storage Instructions

Stable for 1 year at -20°C from date of shipment. For maximum recovery of product, centrifuge the original vial after thawing and prior to removing the cap. Aliquot to avoid repeated freezing and thawing. Aliquot will be stable at 4°C for 3 months.

### Images



Western blot analysis of Hela cell lysate with Bcl-2 mouse mAb diluted at 1:1000.



at 1:200 dilution staining Bcl2 by immunohistochemistry on paraffin-embedded human tonsil tissue.