

Anti-Cytokeratin 19 Mouse Monoclonal Antibody



<u>Catalog No.</u>	<u>Size</u>
E010150-01	50µl
E010150-02	100µl

Product Name	Anti-Cytokeratin 19 Mouse Monoclonal Antibody
Product type	Primary Antibody
Application	WB IHC IF
Description	Mouse Monoclonal to Cytokeratin 19 antibody
Immunogen	A synthetic peptide conjugated to KLH
Specificity	Human Mouse Rat

Background Information

This protein is a member of the keratin family. The type I cytokeratins consist of acidic proteins which are arranged in pairs of heterotypic keratin chains. Unlike its related family members, this smallest known acidic cytokeratin is not paired with a basic cytokeratin in epithelial cells. It is specifically expressed in the periderm, the transiently superficial layer that envelopes the developing epidermis. Keratin 19 is not expressed in hepatocytes, therefore, antibody to keratin 19 is useful in the identification of liver metastasis. The degree of keratin 19 positivity in breast cancer distinguishes malignant from benign tumours. Keratin 19 is often co-expressed with keratin 7.

Application Notes

Optimal working dilutions should be determined experimentally by the investigator. Prepare working dilution immediately before use. Suggested starting dilutions are as follows: Western blot (1:1000-1:5,000), Immunofluorescence and Immunocytochemistry (1:200-1:800).

Host

Mouse

Clonality

Storage Buffer

1mg/ml in PBS, pH 7.4 with 0.02% sodium azide, 50% Glycerol.

Form

Liquid, 1mg/ml

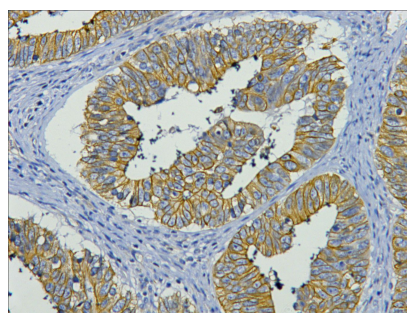
Storage Instructions

Stable for 1 year at -20°C from date of shipment. For maximum recovery of product, centrifuge the original vial after thawing and prior to removing the cap. Aliquot to avoid repeated freezing and thawing. Aliquot will be stable at 4°C for 3 months.

Images



Western blot analysis of HT-29 cell lysate with CK19 mouse mAb diluted at 1:2000.



1/200 dilution staining CK19 by immunohistochemistry on paraffin-embedded human colon cancer tissue.