

Anti-ErbB 2 Mouse Monoclonal Antibody



| <u>Catalog No.</u> | <u>Size</u> |
|--------------------|-------------|
| E010190-01 | 50µl |
| E010190-02 | 100µl |

| | |
|---------------------|---------------------------------------|
| Product Name | Anti-ErbB 2 Mouse Monoclonal Antibody |
| Product type | Primary Antibody |
| Application | WB IHC IF |
| Description | Mouse Monoclonal to ErbB 2 antibody |
| Immunogen | A synthetic peptide conjugated to KLH |
| Specificity | Human Mouse Rat |

Background Information

ErbB 2 is a receptor tyrosine kinase of the ErbB 2 family. It is closely related in structure to the epidermal growth factor receptor. ErbB 2 oncoprotein is detectable in a proportion of breast and other adenocarcinomas, as well as transitional cell carcinomas. In the case of breast cancer, expression determined by immunohistochemistry has been shown to be associated with poor prognosis.

Application Notes

Optimal working dilutions should be determined experimentally by the investigator. Prepare working dilution immediately before use. Suggested starting dilutions are as follows: Western Blot (1:1000-1:3000), Immunofluorescence and Immunocytochemistry (1:200-1:800).

Host

Mouse

Clonality

Storage Buffer

1mg/ml in PBS, pH 7.4 with 0.02% sodium azide, 50% Glycerol.

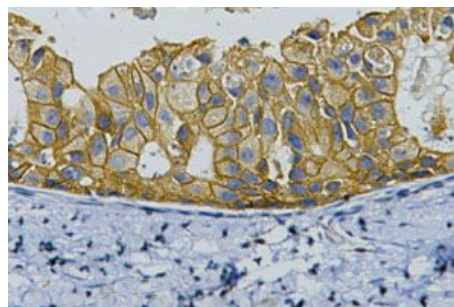
Form

Liquid, 1mg/ml

Storage Instructions

Stable for 1 year at -20°C from date of shipment. For maximum recovery of product, centrifuge the original vial after thawing and prior to removing the cap. Aliquot to avoid repeated freezing and thawing. Aliquot will be stable at 4°C for 3 months.

Images



1:200 dilution staining HER-2 by Immunohistochemistry on paraffin-embedded human breast cancer tissue.