

Anti- Glucocorticoid receptor/GR Polyclonal Antibody



<u>Catalog No.</u>	<u>Size</u>
E010340-01	50µl
E010340-02	100µl

Specificity	Anti- Glucocorticoid receptor/GR (Human Mouse Rat)
Source	Rabbit Polyclonal (Isotype: IgG)
Application	WB
Form	Liquid, 1 mg/ml

Specificity and Sensitivity

The glucocorticoid receptor (GR or GCR).The GR is expressed in almost every cell in the body and regulates genes controlling the development, metabolism, and immune response. Because the receptor gene is expressed in several forms, it has many different (pleiotropic) effects in different parts of the body.

Specificity and Sensitivity

The GR Rabbit Polyclonal antibody detects endogenous GR proteins.

Source and Purification

The antibody was affinity-purified from rabbit antiserum by affinity-chromatography using epitope-specific immunogen.

Application Notes

Optimal working dilutions should be determined experimentally by the investigator. Suggested starting dilutions are as follows:

WB: 1:3,000

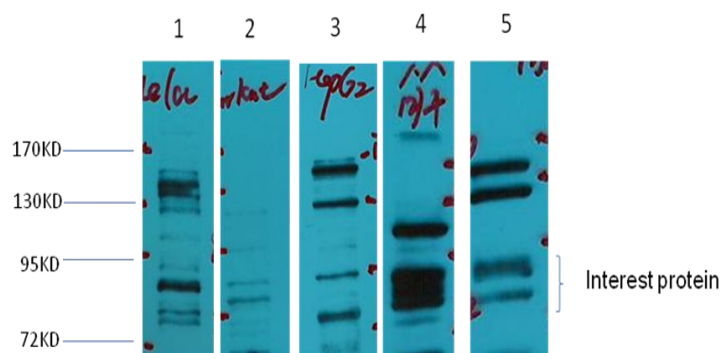
Storage Buffer

PBS, pH 7.4, 150mM NaCl, 0.02% sodium azide and 50% glycerol.

Storage Instructions

Stable for 1 year at -20°C from date of shipment. For maximum recovery of product, centrifuge the original vial after thawing and prior to removing the cap. Aliquot to avoid repeated freezing and thawing. Aliquot will be stable at 4°C for 3 months.

Images



Western blot analysis of 1) Hela, 2) Jurkat, 3) HepG2, 4) Mouse Liver tissue, 5) Rat Brain tissue, with GR Rabbit pAb diluted at 1:2,000.