

# Anti-Histone H3 (tri methyl K36) Monoclonal Antibody



Catalog No.	Size
E010352-01	50 µl
E010352-01	100 µl

Specificity	Anti-Histone H3 (tri methyl K36) (human mouse)
Source	Mouse Monoclonal
Application	WB
Form	Liquid, 1 mg/ml

## Product

**Other Names:** H3 histone antibody, HIST1H3A antibody, Histone cluster 1, H3a antibody

## Specificity and Sensitivity

Antibody can detect endogenous levels of Histone H3 (tri methyl K36).

## Source and Purification

The antiserum was produced against synthesized peptide derived from Internal of human Histone H3 (tri methyl K36). The antibody was affinity-purified from mouse antiserum by affinity-chromatography using epitope-specific immunogen.

## Application Notes

Optimal working dilutions should be determined experimentally by the investigator. Suggested starting dilutions are as follows:

WB: 1:1000-3000

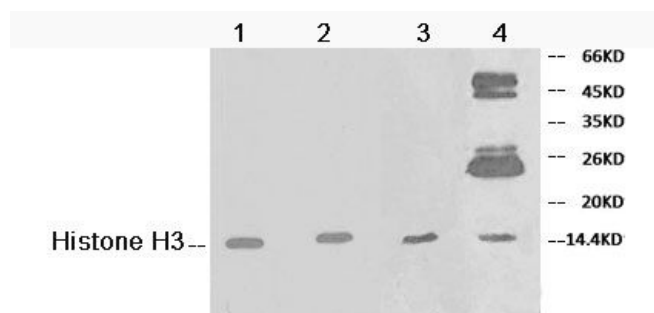
## Storage Buffer

Rabbit IgG in phosphate buffered saline (without  $Mg^{2+}$  and  $Ca^{2+}$ ), pH 7.4, 150mM NaCl, 0.02% sodium azide and 50% glycerol.

## Storage Instructions

Stable for 1 year at -20°C from date of shipment. For maximum recovery of product, centrifuge the original vial after thawing and prior to removing the cap. Aliquot to avoid repeated freezing and thawing. Aliquot will be stable at 4°C for 3 months.

## Images



Western blot analysis of extracts from *HeLa* cells (line 1, 1:1000, line 2, 1:5000), HepG2 (line 3), Mouse Spleen tissue (line 4), using Histone H3 antibody.