

Anti- α Skeletal Muscle Actin Mouse Monoclonal



Antibody(4B11)

Catalog No.	Size
E010487-01	50 μ l
E010487-02	100 μ l

Specificity	Anti- α Skeletal Muscle Actin (human mouse rat)
Source	Mouse Monoclonal
Application	WB
Form	Liquid, 1 mg/ml

Product

Other Names: ACTA antibody, ACTA1 antibody, ACTC antibody, ACTC1 antibody, Actin alpha cardiac muscle antibody, ACTS antibody, Alpha actin 1 antibody, Cardiac muscle alpha actin 1 antibody, Skeletal muscle alpha actin 1 antibody

Specificity and Sensitivity

The antibody can detect endogenous α Skeletal Muscle Actin protein.

Source and Purification

The antiserum was produced against synthesized peptide of α Skeletal Muscle Actin.

The antibody was affinity-purified by affinity-chromatography using epitope-specific immunogen.

Application Notes

Optimal working dilutions should be determined experimentally by the investigator. Suggested starting dilutions are as follows:

WB 1:5000-1:10000

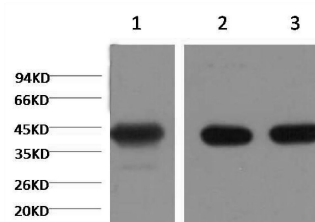
Storage Buffer

Mouse IgG in phosphate buffered saline (without Mg^{2+} and Ca^{2+}), pH 7.4, 150mM NaCl, 0.02% sodium azide and 50% glycerol.

Storage Instructions

Stable for 1 year at -20°C from date of shipment. For maximum recovery of product, centrifuge the original vial after thawing and prior to removing the cap. Aliquot to avoid repeated freezing and thawing. Aliquot will be stable at 4°C for 3 months.

Images



Western blot analysis of Hela (line 1), Mouse Brain tissue (line 2), and Rat Brain tissue (line 3) with , diluted at 1:20,000.

Related Products

PW001: Super ECL Assay kit

E030120 : HRP, Goat Anti-Rabbit IgG(H+L)

E030220 : AP, Goat Anti-Rabbit IgG(H+L)

E021010: Anti-GAPDH Mouse Monoclonal Antibody

E021020: Anti-beta Actin Mouse Monoclonal Antibody

E022330: Anti-His Tag Mouse Monoclonal Antibody-HRP