

Anti-MBP Tag Polyclonal Antibody



| <u>Catalog No.</u> | <u>Size</u> |
|--------------------|-------------|
| E022240-01 | 100µl |
| E022240-02 | 500µl |
| E022240-03 | 50µl |

| | |
|--------------------|-------------------|
| Specificity | Anti- MBP Tag |
| Source | Rabbit Polyclonal |
| Application | WB IHC IF IP |
| Form | Liquid, 1 mg/ml |

Background Information

Maltose binding protein (MBP) is a useful affinity tag that can increase the expression level and solubility of the MBP tagged protein. It promotes proper folding of the fusion protein, and it can be also used to prevent an insoluble form (inclusion bodies). MBP Tag antibody is suitable for detecting fusion proteins that contain a MBP-tag.

Source and Purification

This Polyclonal antibody is produced by immunizing rabbits with purified MBP protein. Antibodies are purified by protein A affinity chromatography.

Application Notes

Optimal working dilutions should be determined experimentally by the investigator. Prepare working dilution immediately before use. Suggested starting dilutions are as follows: Western Blot (1:1000-1:5000), Immunofluorescence and Immunocytochemistry (1:200-1:800), Immunoprecipitation (1:200).

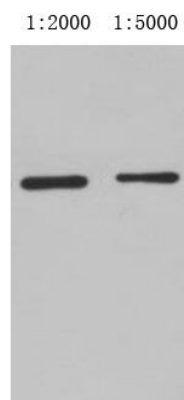
Storage Buffer

PBS, pH 7.4 with 0.05% sodium azide, 50% Glycerol.

Storage Instructions

Stable for 1 year at -20°C from date of shipment. For maximum recovery of product, centrifuge the original vial after thawing and prior to removing the cap. Aliquot to avoid repeated freezing and thawing. Aliquot will be stable at 4°C for 3 months.

Images



Multi Tag Recombinant protein (expressed in E.coli)
Primary antibody Anti-MBP PAB lane 1: 1:2000 lane 2 1:500