

# Anti-mCherry Tag Polyclonal Antibody



<u>Catalog No.</u>	<u>Size</u>
E022250-01	100µl
E022250-02	500µl
E022250-03	50µl

<b>Specificity</b>	Anti- mCherry Tag (C-terminal, and N-terminal)
<b>Source</b>	Rabbit Polyclonal
<b>Application</b>	WB
<b>Form</b>	Liquid, 1 mg/ml

## Application Notes

Optimal working dilutions should be determined experimentally by the investigator. Prepare working dilution immediately before use. Suggested starting dilutions are as follows: Western blot (1:1000-1:5000)

## Source and Purification

This Polyclonal antibody is produced by immunizing rabbits with purified Recombinant mCherry expressed in E.coli. Antibodies are purified by protein A affinity chromatography.

## Specificity and Sensitivity

Anti- mCherry Tag Polyclonal Antibody recognizes C-terminal and N-terminal mCherry-tagged proteins.

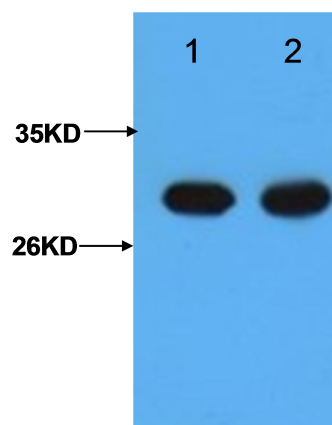
## Storage Buffer

PBS, pH 7.4 with 0.05% sodium azide, 50% Glycerol.

## Storage Instructions

Stable for 1 year at -20°C from date of shipment. For maximum recovery of product, centrifuge the original vial after thawing and prior to removing the cap. Aliquot to avoid repeated freezing and thawing. Aliquot will be stable at 4°C for 3 months.

## Images



Western blot analysis with mCherry-tag rabbit PAb diluted at 1:5000(lane 1) and 1:10000(lane 2).